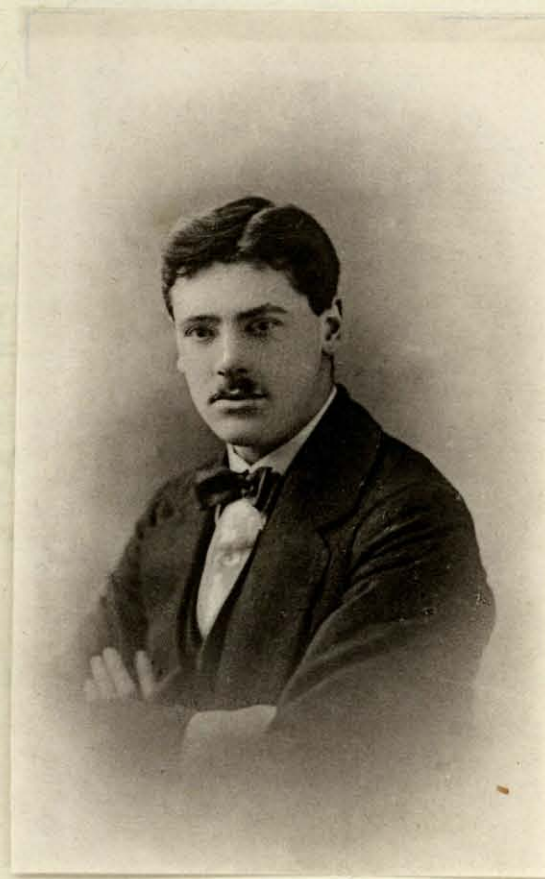


**T**HOMAS BEECH BARTON was the only son of Mr. and Mrs. T. B. Barton of Congleton, Cheshire, and was born at Wrexham on December 28, 1899. He entered Grafton House in September 1913, and left in July 1916.

On leaving school he endeavoured to get into a cadet unit, but was rejected medically. Enlisting later, he was training at Park Hall Camp, Oswestry, when he developed pneumonia and died on June 30, 1918.

T. B. Barton was a member of the Manchester School of Music, where he was regarded as one of its most promising violin students.



THOMAS BEECH BARTON